



**R&B** TEXTILES

Basics and Beyond!

Spring 2021

2  
green  
zebras



# Little Darlings Safari

by Sillier Than Sally Designs

AUSTRALIAN DESIGNER

**R&B**  
BOUTIQUE



Front

Reversible Quilt by Stacey Day  
Quilt approximately 48" x 54"

A PDF of yardage requirements\* AVAILABLE NOW to  
download at [www.pbtex.com/freepatterns](http://www.pbtex.com/freepatterns)



Back



# Little Darlings Safari

by Sillier Than Sally Designs

AUSTRALIAN DESIGNER



Front



Back



Front



Back

Reversible Pillows by Cyndi Hershey  
Pillow approximately 19" square

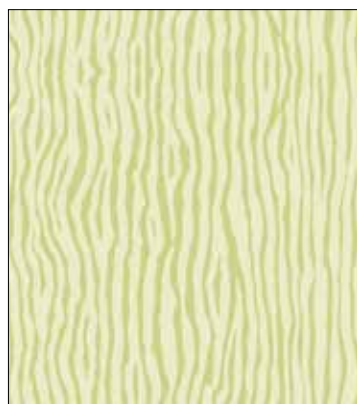
A PDF of yardage requirements\* AVAILABLE NOW to  
download at [www.pbtex.com/freepatterns](http://www.pbtex.com/freepatterns)



Fabric expected to ship January 2022.



PB4544PA 10 yards = 10 panels Blocks approximately 7 7/8" x 9 3/4" including 1/8" border; 1 5/8" between blocks; 1 1/4" top and bottom; 3 1/4" on either selvedge. Size may vary on printed fabric.



PB4552G



PB4552NE



PB4552P



PB4552S



# Little Darlings Safari

by Sillier Than Sally Designs

AUSTRALIAN DESIGNER



PB4545PA 10 yard = 15 panels Images approximately 18 3/8" x 18 5/8" including stripe; 2 3/4" between blocks; 2 1/4" top and bottom; 1 1/2" each selvedge.



PB4546PA 10 yard = 15 panels Images approximately 18 3/8" x 18 5/8" including stripe; 2 3/4" between blocks; 2 1/4" top and bottom; 1 1/2" each selvedge.



PB4548MU



PB4551LS



PB4549MU



Fabric expected to ship January 2022.



PB4547MU 8 repeats across the width; ribbon approximately 1"; animal strip 4 1/4"



PB4550MU



PB4553MU



PB4551MU



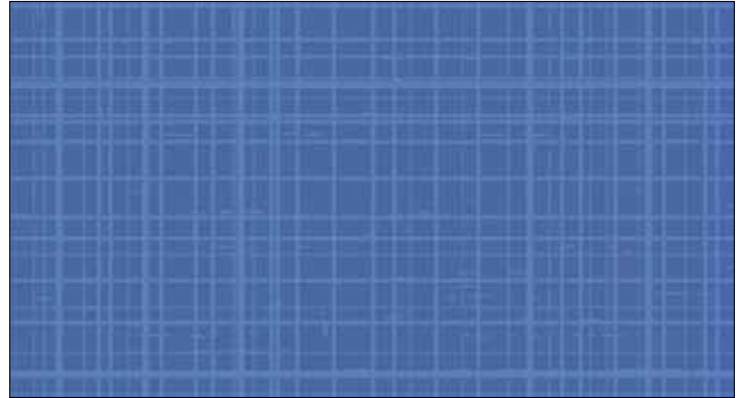
# Linen Darlings

by Sillier Than Sally Designs

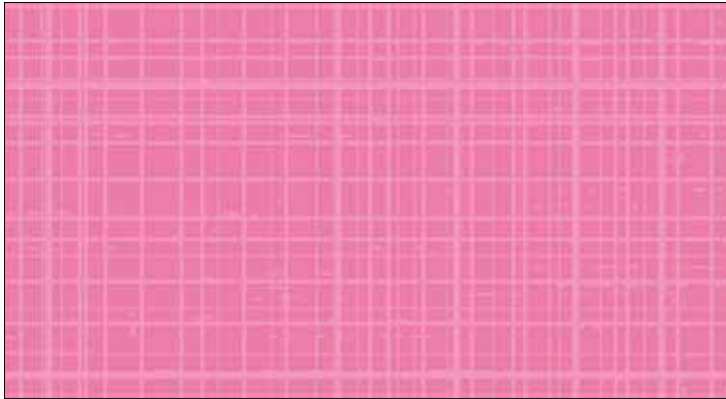
AUSTRALIAN DESIGNER



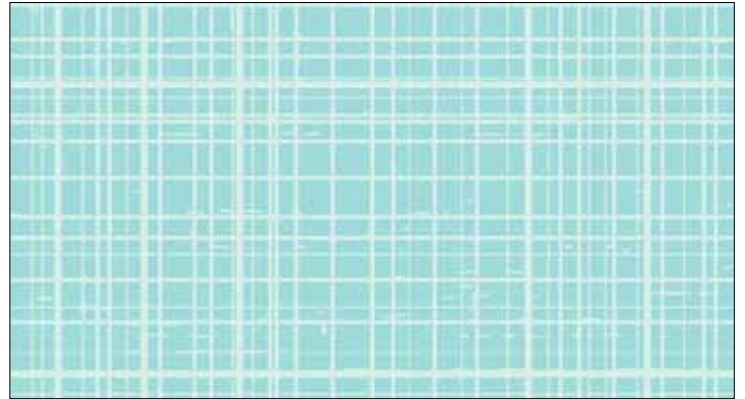
PB4564LP



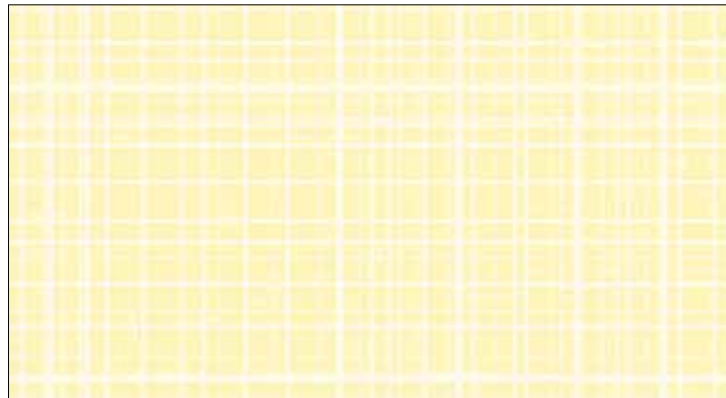
PB4564B



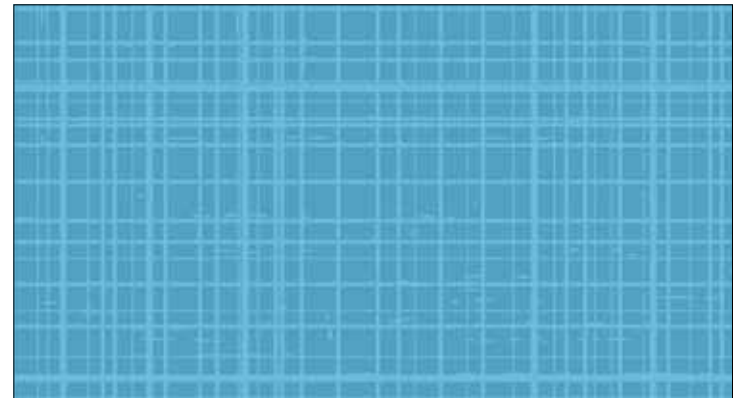
PB4564P



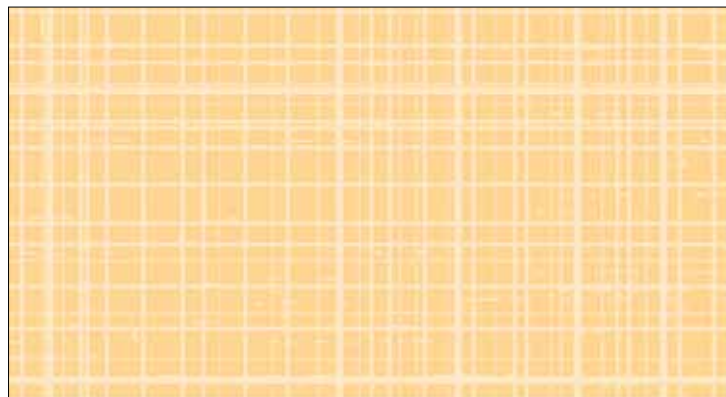
PB4564LT



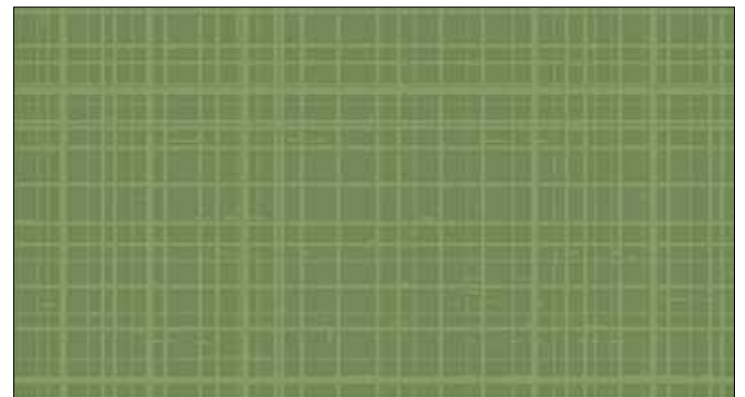
PB4564Y



PB4564T

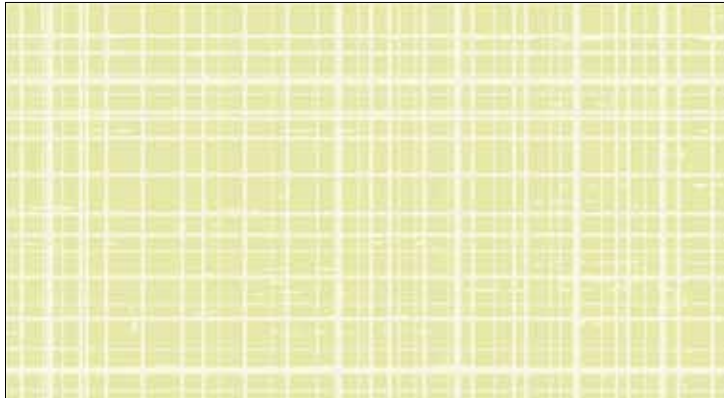


PB4564YY

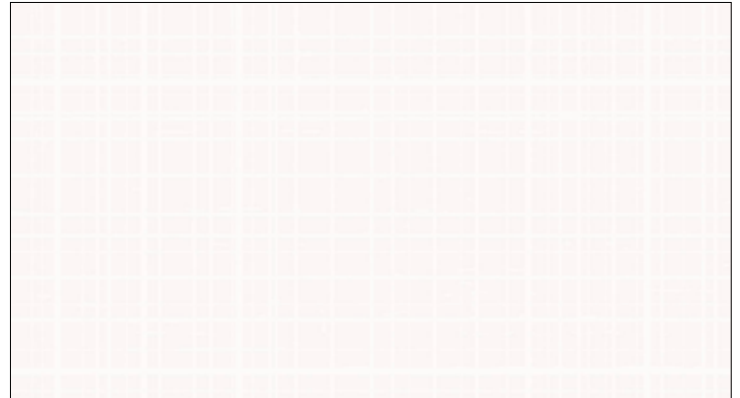


PB4564GG

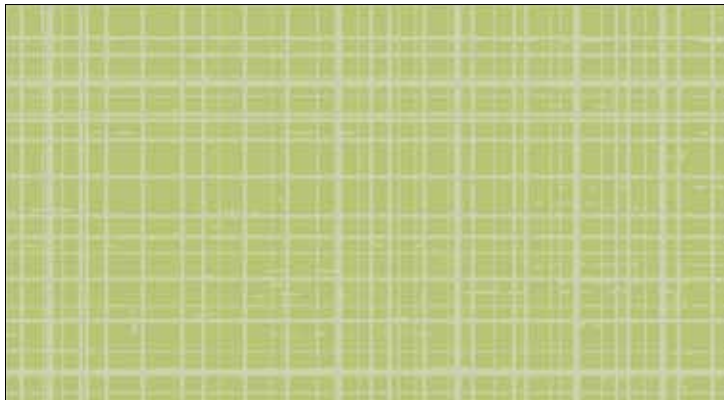
Fabric expected to ship October 2021.



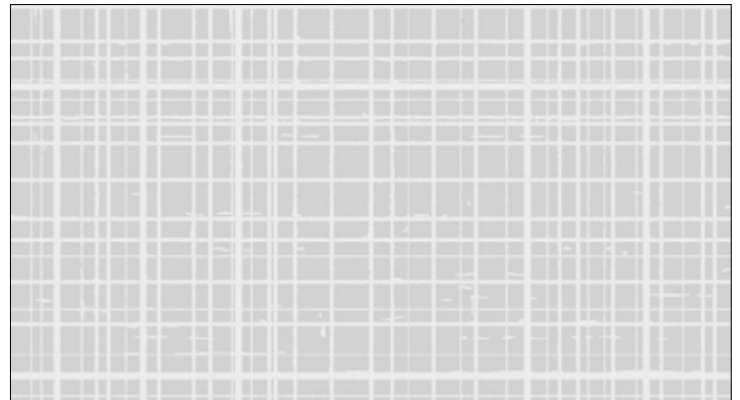
PB4564LG



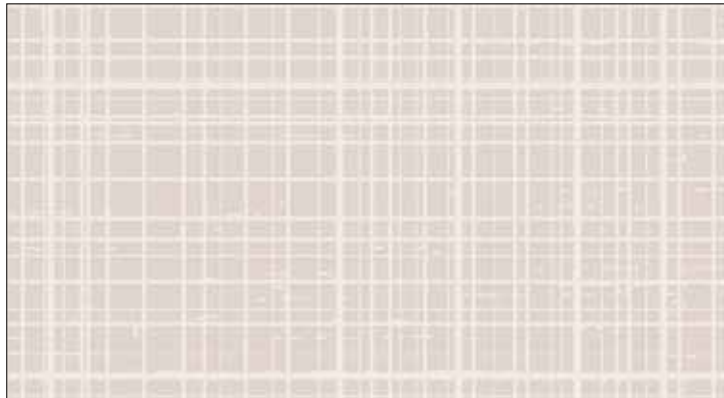
PB4564E



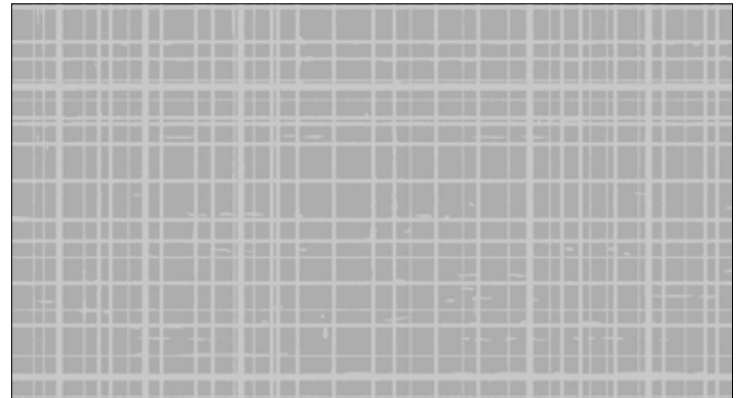
PB4564G



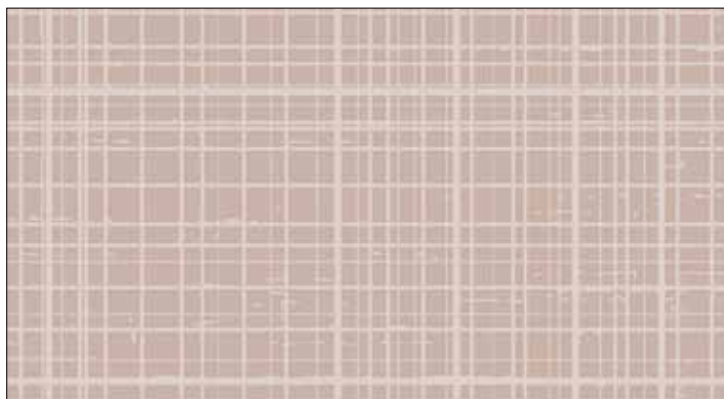
PB4564LS



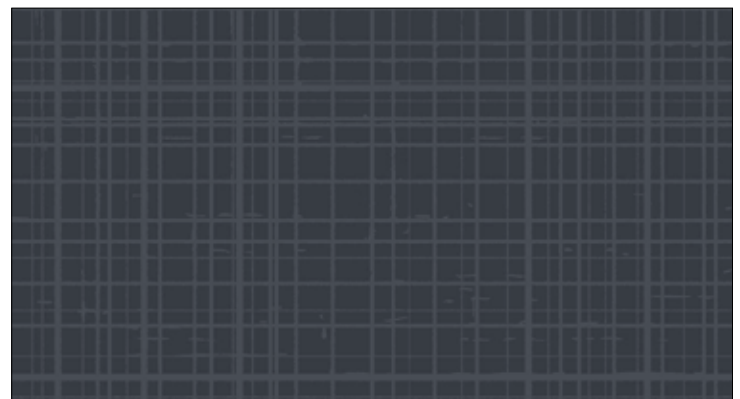
PB4564NE



PB4564S



PB4564LZ



PB4564K



# Feathered Fiesta

by Eulalia Mejia



Quilt by Cyndi Hershey  
Quilt approximately 64" x 64"

A PDF of yardage requirements\* AVAILABLE NOW to  
download at [www.pbtex.com/freepatterns](http://www.pbtex.com/freepatterns)





PB4572PA 10 yards = 9 panels Blocks approximately 12"square; 3/4" top and bottom, between blocks and selvages 1 1/2".  
Size may vary on printed fabric.



PB4579B



PB4579R



PB4579Y



# Feathered Fiesta by Eulalia Mejia



PB4576MU 6 repeats across the width; chickens with multicolored ribbon approximately  $5 \frac{3}{8}$ "; selvages  $\frac{5}{8}$ " and between borders  $1 \frac{7}{8}$ "



PB4574MU



PB4578MU



Fabric expected to ship September 2021.



PB4573MU



PB4577MU



PB4575J



PB4575Y



PB4575B





# Meandering Macramé by Dina June



Quilt by Cyndi Hershey  
Quilt approximately 66" square

A PDF of yardage requirements\* AVAILABLE NOW to  
download at [www.pbtex.com/freepatterns](http://www.pbtex.com/freepatterns)



Fabric expected to ship September 2021.



PB4586PA 10 yards = 15 panels Small blocks approximately 9 3/4" square including 1/4" border; large block approximately 20 1/4" square; 3/4" between blocks; 1 1/4" top and bottom; selvages 3/4"



PB4587MU

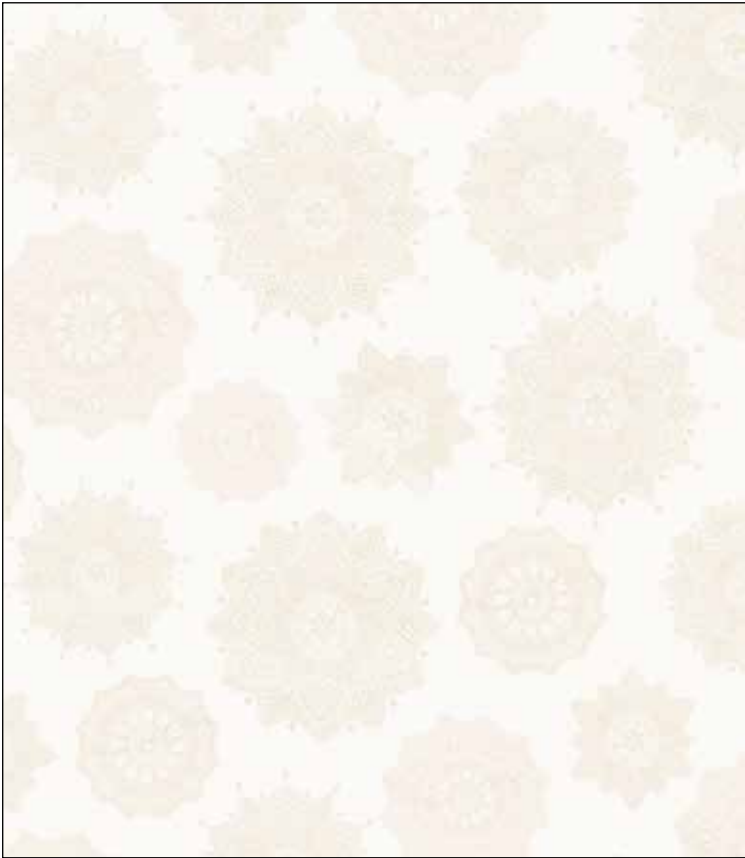


PB4587B



# Meandering Macrame

by Dina June



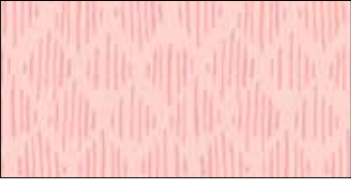
PB4591E



PB4588T



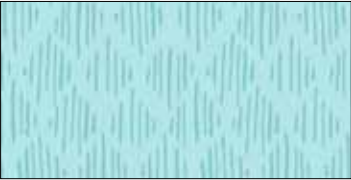
PB4592MU



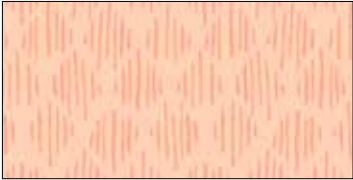
PB4589P



PB4589G



PB4589T



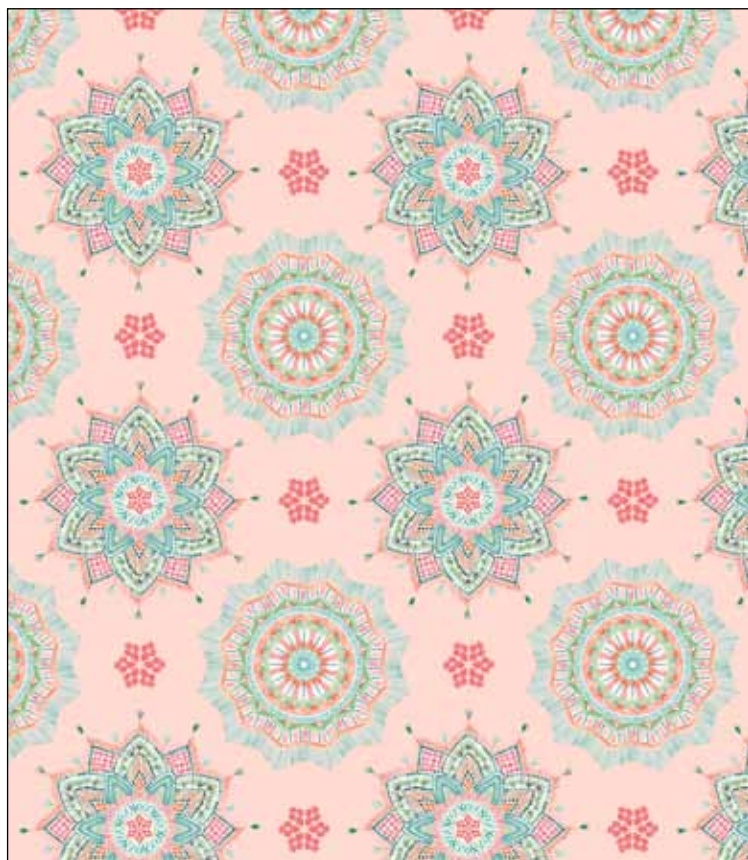
PB4589J



PB4590MU 12 repeats across the width; repeat 3 1/4"



Fabric expected to ship September 2021.



PB4588P



PB4588MU





# Spring's Wings by Kathy Kehoe Bambeck



Quilt by Wendy Sheppard  
Quilt approximately 66" x 90"

A PDF of yardage requirements\* AVAILABLE NOW to  
download at [www.pbtex.com/freepatterns](http://www.pbtex.com/freepatterns)



Fabric expected to ship December 2021.



PB4535B



PB4535G



PB4529PA 10 yards = 15 panels (rotated)  
Blocks approximately 20 1/2" x 16 1/2" including 1/4"  
dark green border; 1" either side; 3 1/2" top, center and  
bottom



PB4533MU

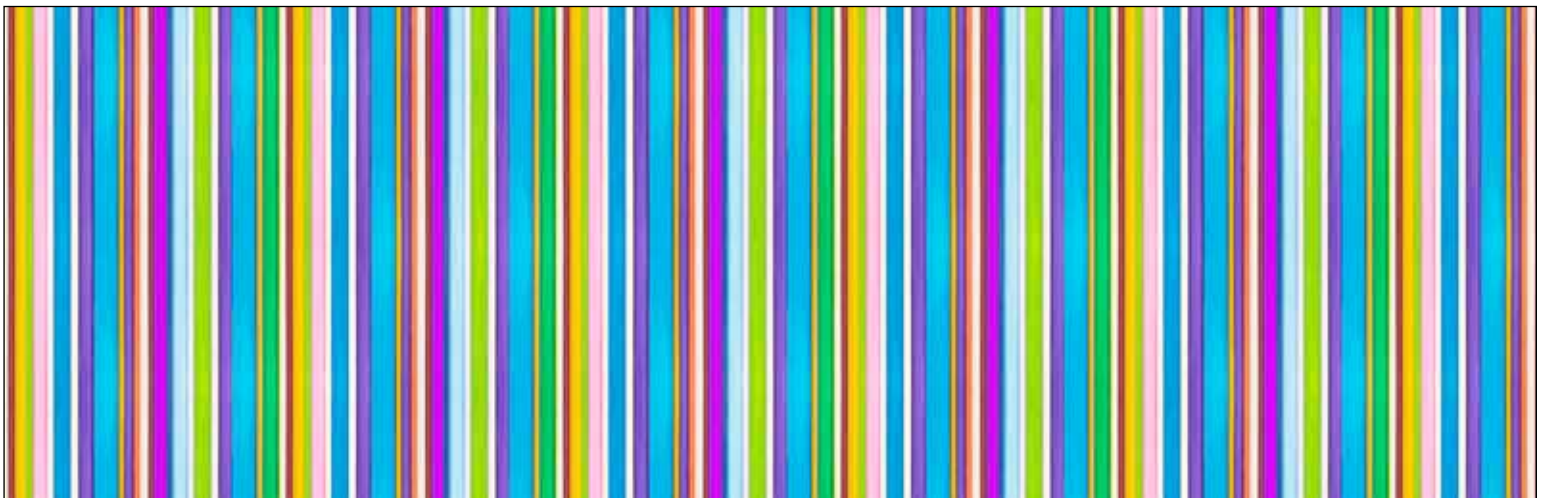


# Spring's Wings

by Kathy Kehoe Bambeck



PB4530MU



PB4532MU



Fabric expected to ship December 2021.



PB4534MU



PB4531MU



# Star Bright

by Jennifer Ellory



Quilt by Cyndi Hershey  
Quilt approximately 47" x 59"; two colorways

A PDF of yardage requirements\* AVAILABLE NOW to  
download at [www.pbtex.com/freepatterns](http://www.pbtex.com/freepatterns)





Quilt by Cyndi Hershey  
Quilt approximately 42" x 60"; two colorways

A PDF of yardage requirements\* AVAILABLE NOW to  
download at [www.pbtex.com/freepatterns](http://www.pbtex.com/freepatterns)



# Star Bright

by Jennifer Ellory



PB4594PA 10 yards = 15 panels (rotated)  
Panel approximately 22" x 40" with 1" border



PB4600J



PB4600Y



Fabric expected to ship December 2021.



PB4595PA 10 yards = 15 panels (rotated)  
Panel approximately 22" x 40" with 1" border



PB4600S



PB4600LT



# Star Bright by Jennifer Ellory



PB4597PA 10 yards = 15 panels Blocks approximately 8 1/2" square; 1 1/2" top, bottom and between blocks; 1 3/4" on either selvedge.



PB4599DB



PB4601DB



PB4598DB





Fabric expected to ship December 2021.



PB4596PA 10 yards = 15 panels Blocks approximately 8 1/2" square; 1 1/2" top, bottom and between blocks; 1 3/4" on either selvedge.



PB4599B



PB4601MU



PB4598MU



PB4602S





# Ambrosia

by Natalie Miles



*Table Runner and Placemats by Cyndi Hershey*  
Table Runner approximately 18" x 54"; placemats 14" x 18"

A PDF of yardage requirements\* AVAILABLE NOW to  
download at [www.pbtex.com/freepatterns](http://www.pbtex.com/freepatterns)



Fabric expected to ship October 2021.



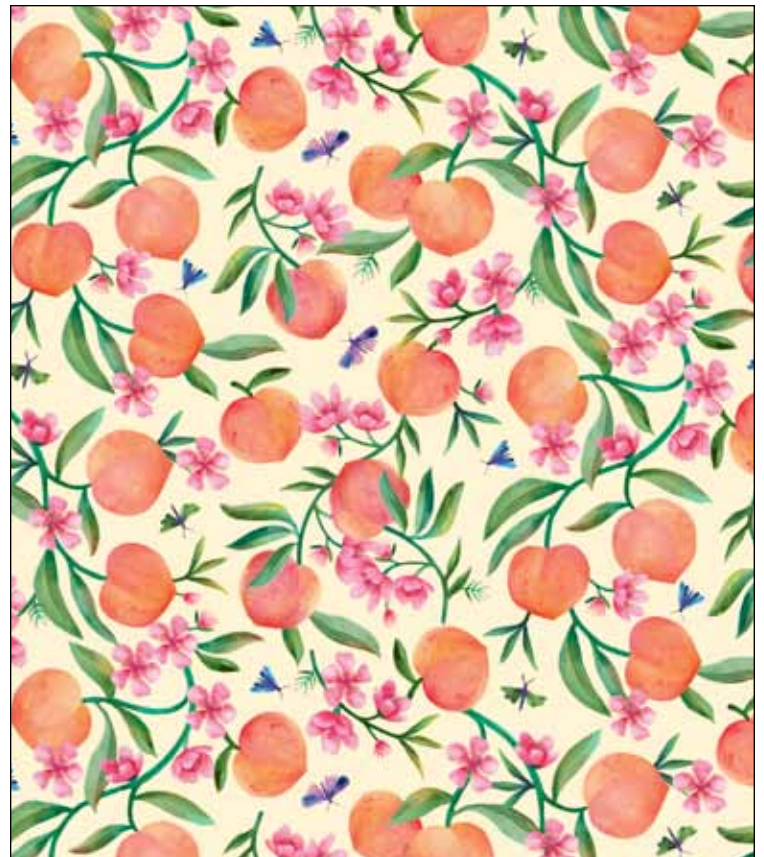
PB4536MU



PB4537MU



PB4538MU



PB4540MU



# Ambrosia

by Natalie Miles



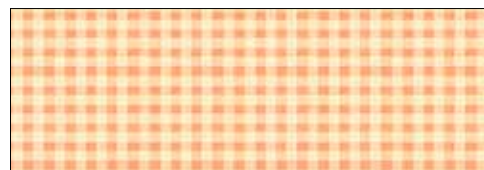
PB4539J



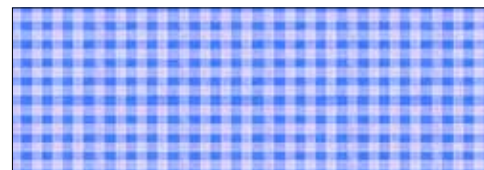
PB4543MU



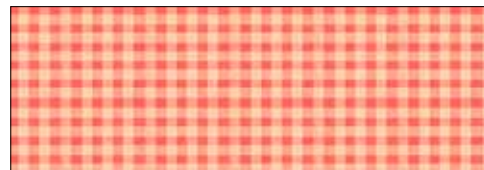
PB4542G



PB4542J



PB4542B



PB4542R



Fabric expected to ship October 2021.



PB4541G



PB4541Y



PB4541B





# Botanical Nectar

by Rachel Heather Lee



Quilt by Cyndi Hershey  
Quilt approximately 58" square

A PDF of yardage requirements\* AVAILABLE NOW to  
download at [www.pbtex.com/freepatterns](http://www.pbtex.com/freepatterns)





*Placemats by Cyndi Hershey*  
*Placemat approximately 13" x 19"*

A PDF of yardage requirements\* AVAILABLE NOW to  
download at [www.pbtex.com/freepatterns](http://www.pbtex.com/freepatterns)



# Botanical Nectar

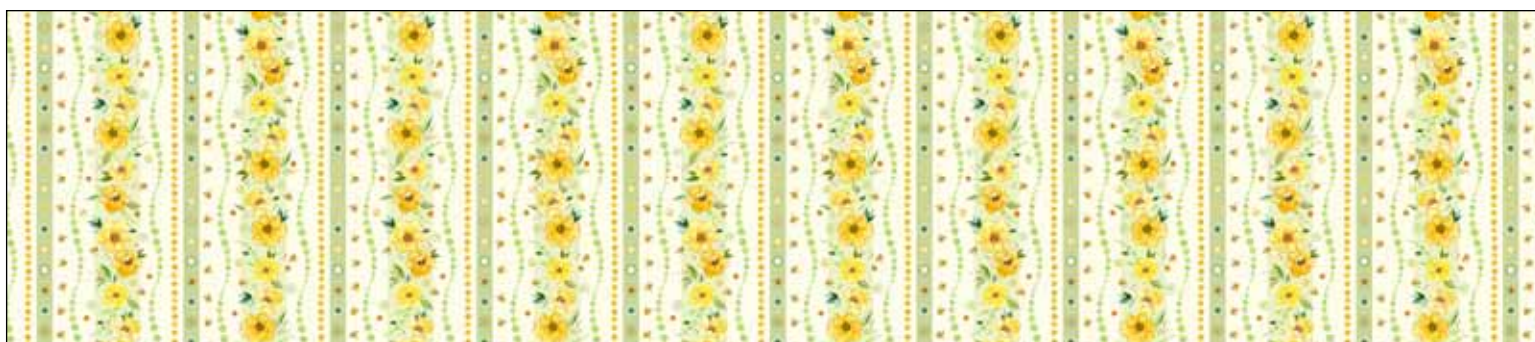
by Rachel Heather Lee



PB4565G



PB4565Y



PB4571MU 10 repeats across the width; repeat approximately 4 1/8"



PB4569G



PB4570E



PB4570Y



PB4570GG



PB4570LG



Fabric expected to ship November 2021.



PB4566E



PB4566Y



PB4567LG



PB4567Y



PB4567MU



PB4568YY



PB4568GG





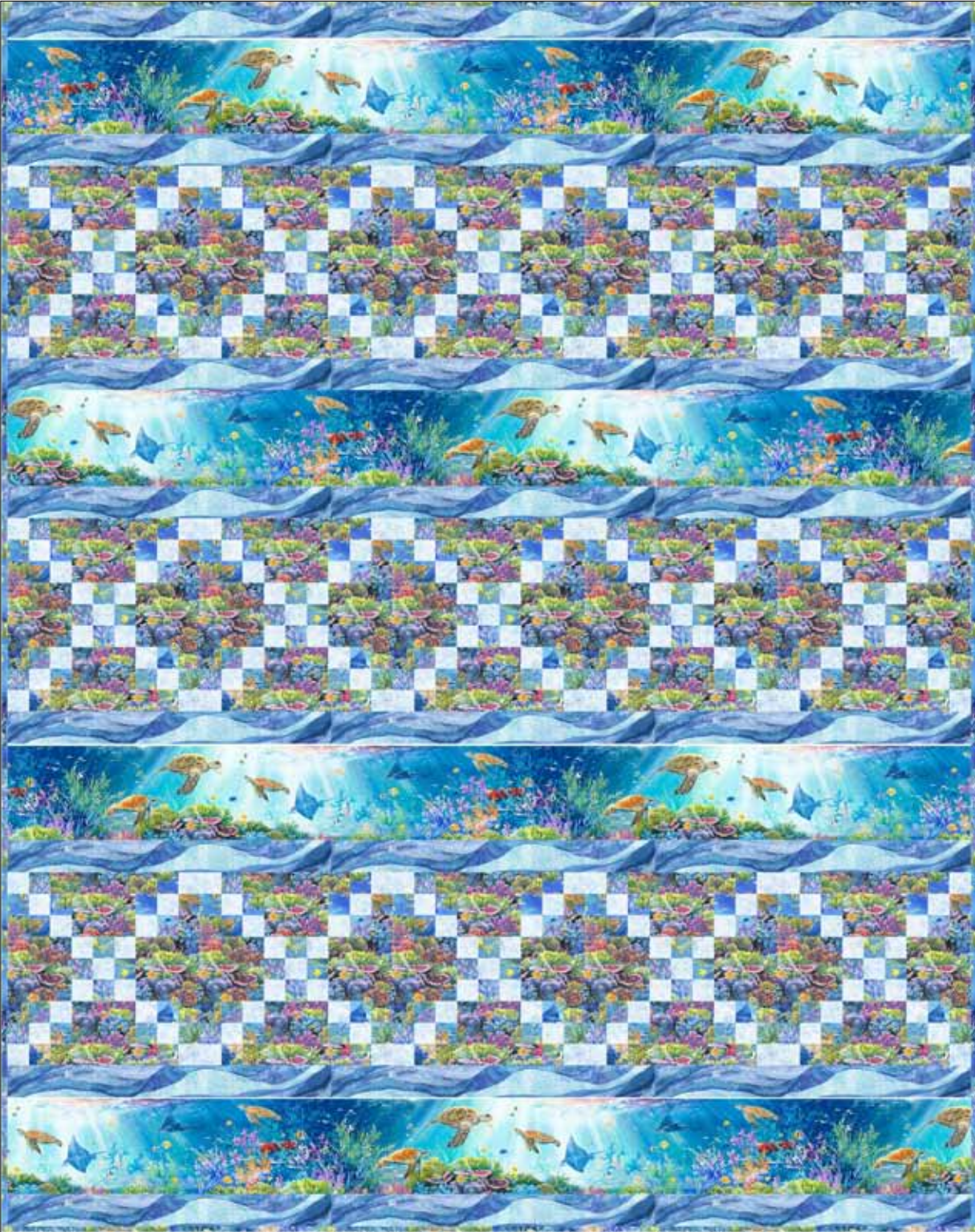
# Weekend in Paradise by Abraham Hunter



Quilt & Pillows by Stacey Day  
Quilt approximately 48" x 42"; pillow approximately 16" square

A PDF of yardage requirements\* AVAILABLE NOW to  
download at [www.pbtex.com/freepatterns](http://www.pbtex.com/freepatterns)





Quilt by Stacey Day  
Quilt approximately 68" x 81"

A PDF of yardage requirements\* AVAILABLE NOW to  
download at [www.pbtex.com/freepatterns](http://www.pbtex.com/freepatterns)



# Weekend in Paradise by Abraham Hunter



PB4580PA 10 yards = 15 panels Small: approximately 10 1/4" x 13 1/4" including 1/8" white border; large: approximately 18 1/4" x 24 1/4" including 1/8" white border.



PB4585MU 1





Fabric expected to ship September 2021.



PB4581MU 5 repeats across the width; border approximately 6 3/4" including 1/8" BW border; waves 1 3/4"; selvages 1 1/2"



PB4582MU



PB4583MU



PB4583B



PB4584P



PB4584B



# Fire & Ice

Fabric expected to ship November 2021.



PB4563NE Full width shown



PB4563LMU Full width shown



PB4563MU Full width shown

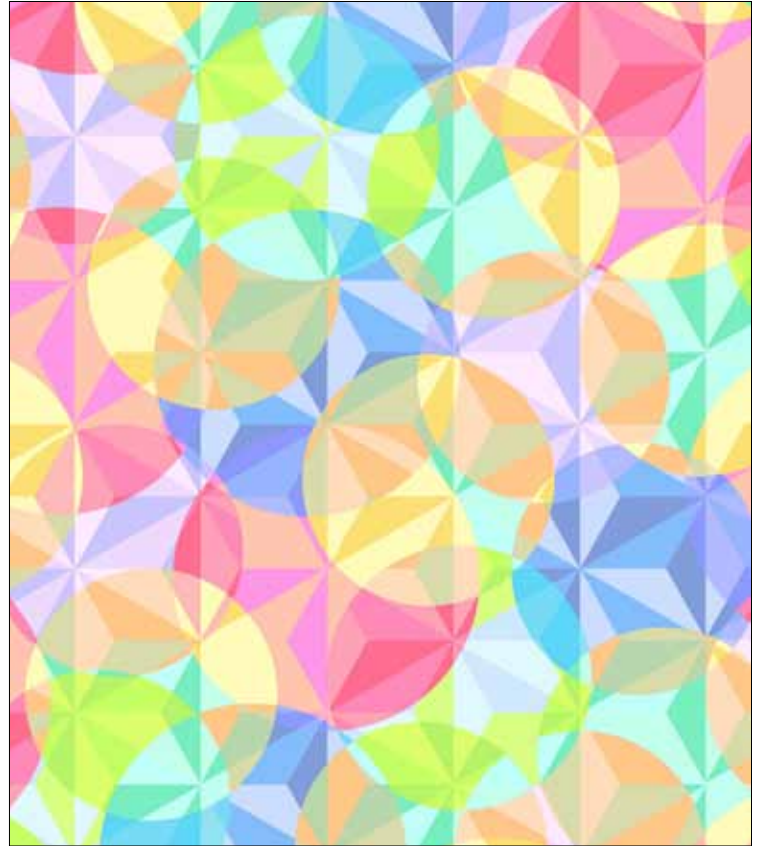


PB4563RO Full width shown

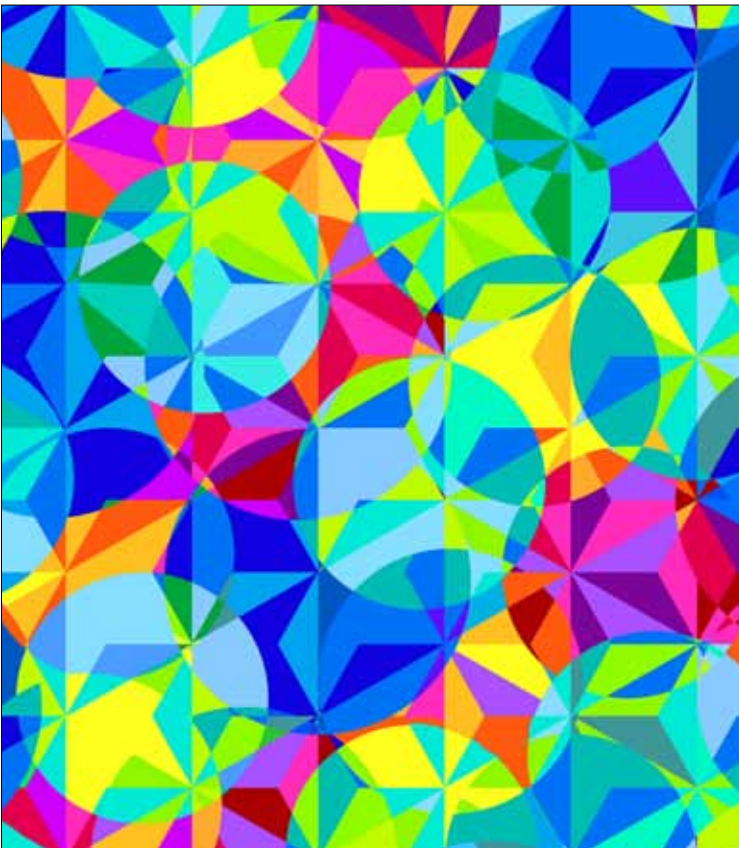




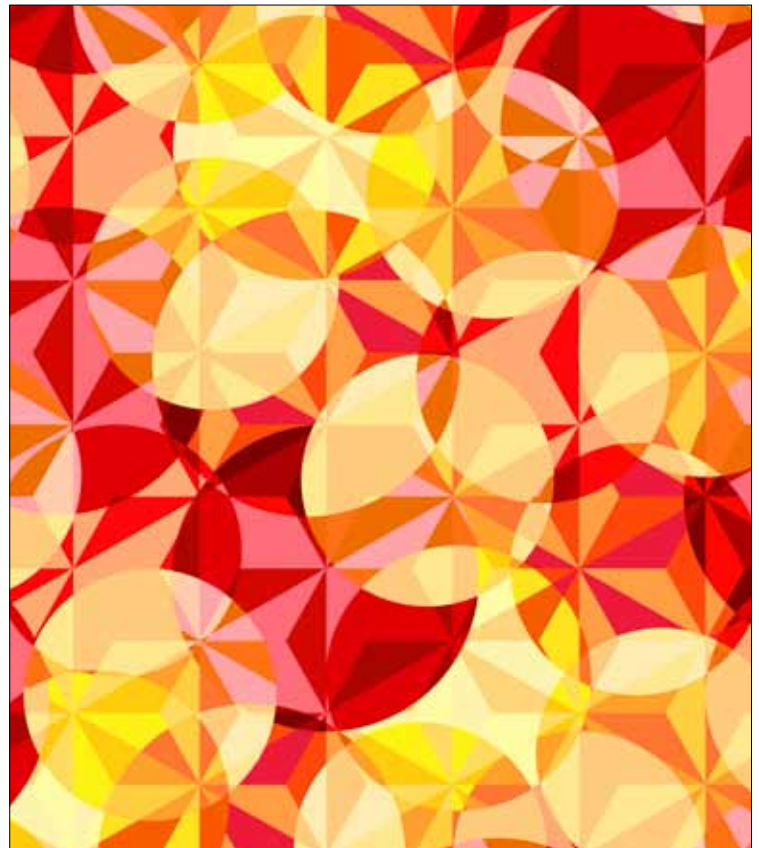
PB4562NE



PB4562LMU



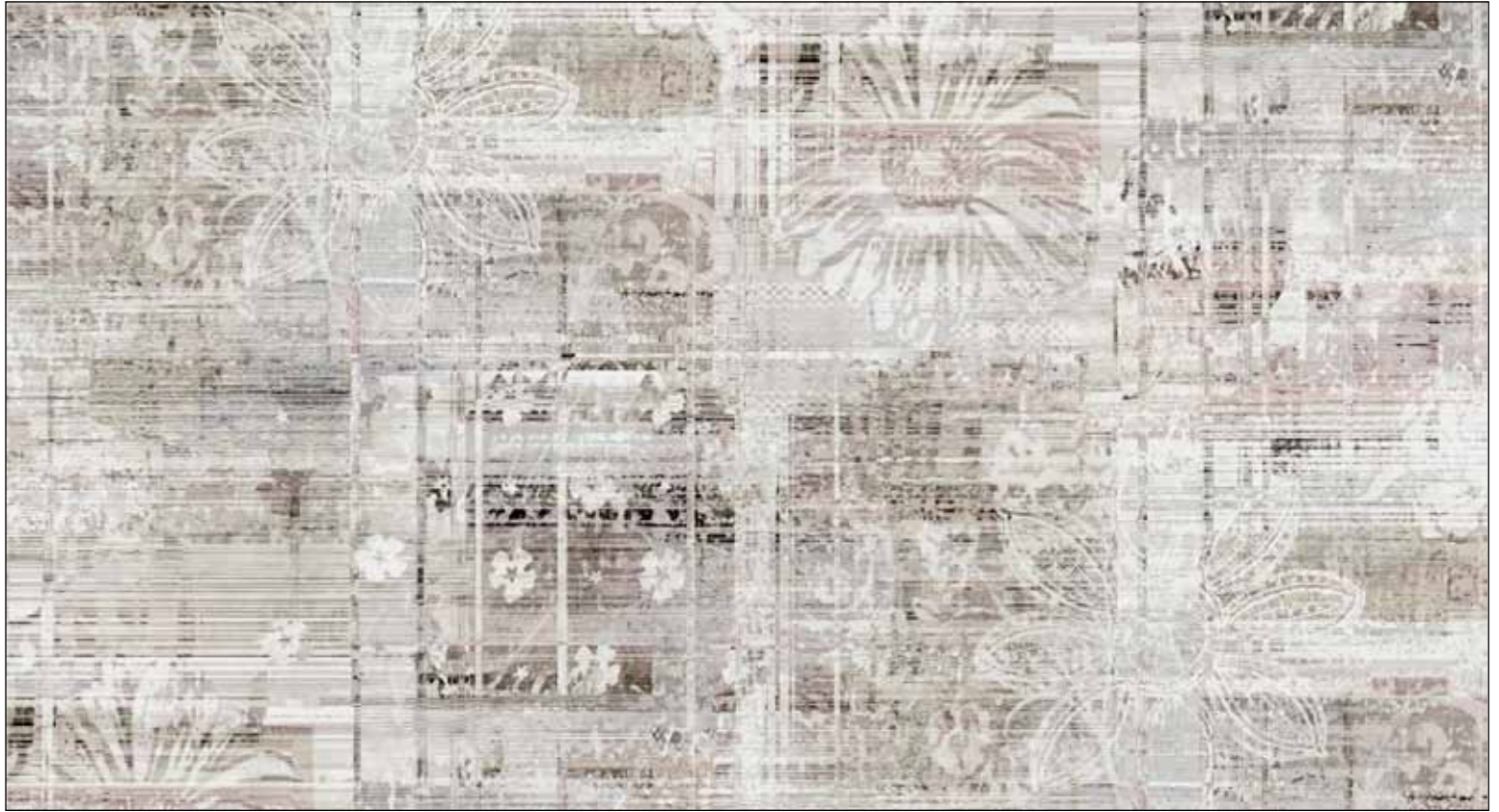
PB4562MU



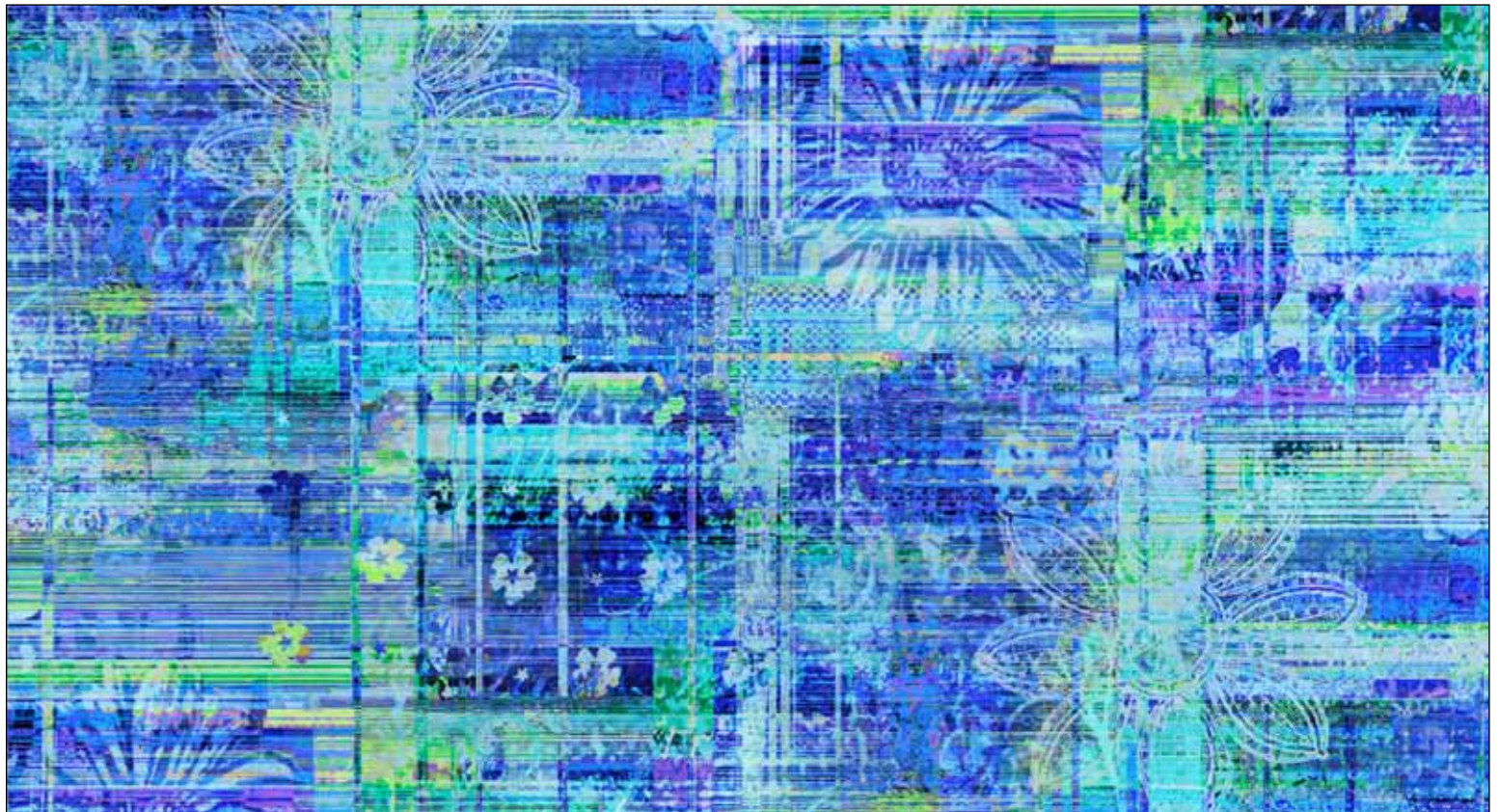
PB4562RO



# Madras 108"



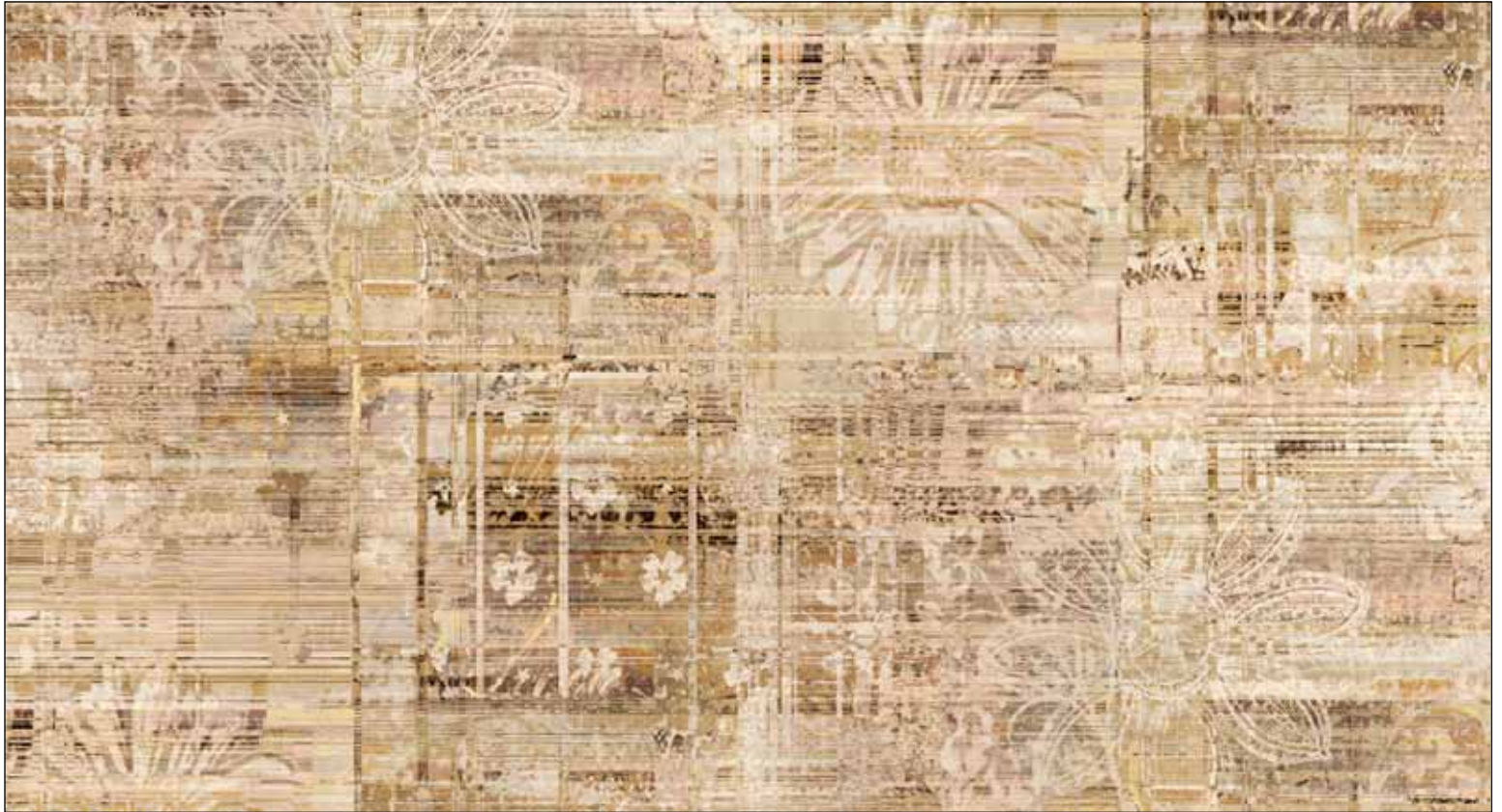
PB4528NE 45" of 108" shown



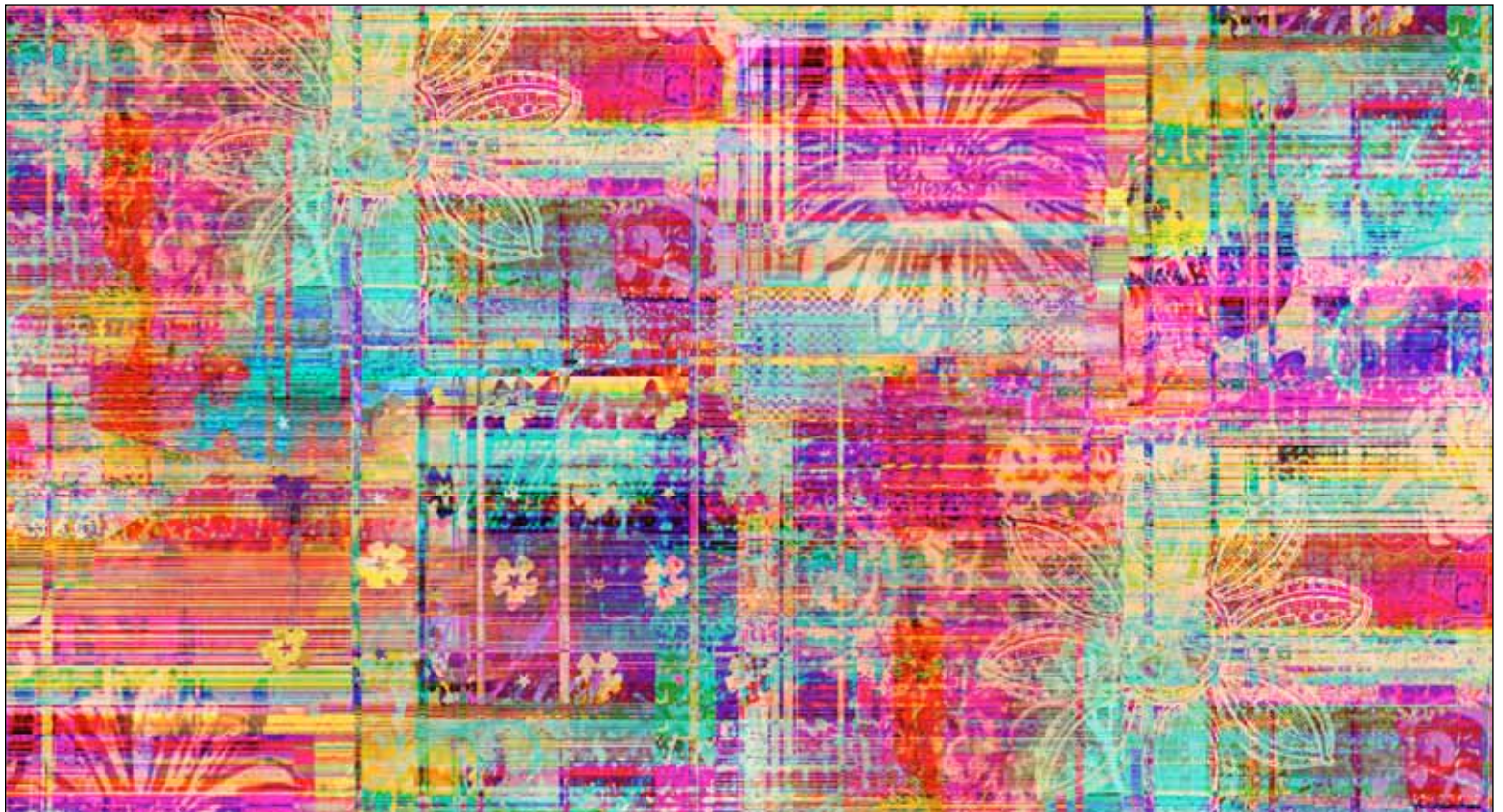
PB4528B 45" of 108" shown



Fabric expected to ship October 2021.



PB4528AU 45" of 108" shown



PB4528MU 45" of 108" shown



# Sahara 108"

Fabric expected to ship November 2021.



PB4593J 45" of 108" shown



PB4593MU 45" of 108" shown





PB4593NE 45" of 108" shown



# Sahara 108"

Fabric expected to ship November 2021.



PB4593T 45" of 108" shown



PB4593SS 45" of 108" shown



# Suede 2 Wideback 108"

Fabric expected to ship August 2021.



PB108Y



PB108J



PB108JJ



PB108LP



PB108P



PB108LB



PB108BB



PB108LT



PB108LG



PB108G



PB108LC



PB108L



PB108SB