

Stockings

CHRISTMAS WISH COLLECTION



FABRIC REQUIREMENTS

Stockings size: 20cm × 30cm (8" × 12")

- Christmas Wish Collection: DV7625: 1m Panel + one (1) Fat Eighth + one (1) Fat 16th of your choice;
- Or
two (2) Fat Eighths + two (2) Fat 16th of your choice.
- Wadding (batting): 30cm × 40cm
- Backing: 30cm × 40cm
- Binding: 50cm × 10cm

GENERAL NOTES

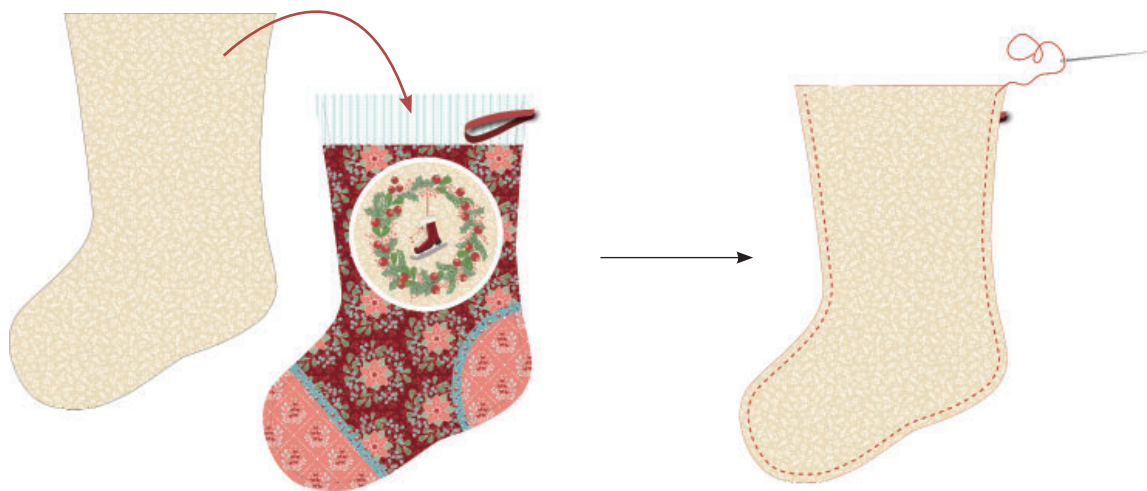
- This is a free pattern. Please do not sale. Thank you.
- Read through all the instructions before starting.
- Press fabrics before cutting.
- Draw the templates onto transparent plastic. Use a fine black permanent marker. Cut out the plastic template as accurately as possible.
- For machine-pieced or hand-pieced approach, the ¼" seam allowance is included in the template.
- Use a mechanical pencil with a 0.7 mm 2B lead to trace templates on fabrics. The 2B lead is soft enough that the fabric will not be distorted during tracing.
- When machine piecing, use a special ¼" patchwork foot to give you the correct seam allowance without the need to mark the fabric.
- Use a 50 wt cotton thread and a size 70 needle for machine sewing

INSTRUCTIONS

1. Cut out one (1) 4½" × 2¼" rectangle for the hanging loop.
2. Fold the loop's fabric in half length-wise with right sides together. Sew along on the long edge using ¼ inch seam allowance.
3. Turn to the right side out the hanging loop. Position the seam allowance to the middle of the loop and press.
4. Fold in half, with the seam inside, and pin the raw edges together.
5. Cut out one (1) stocking Front piece. The ¼" seam allowance is included on the template.

INSTRUCTIONS (CONTINUES)

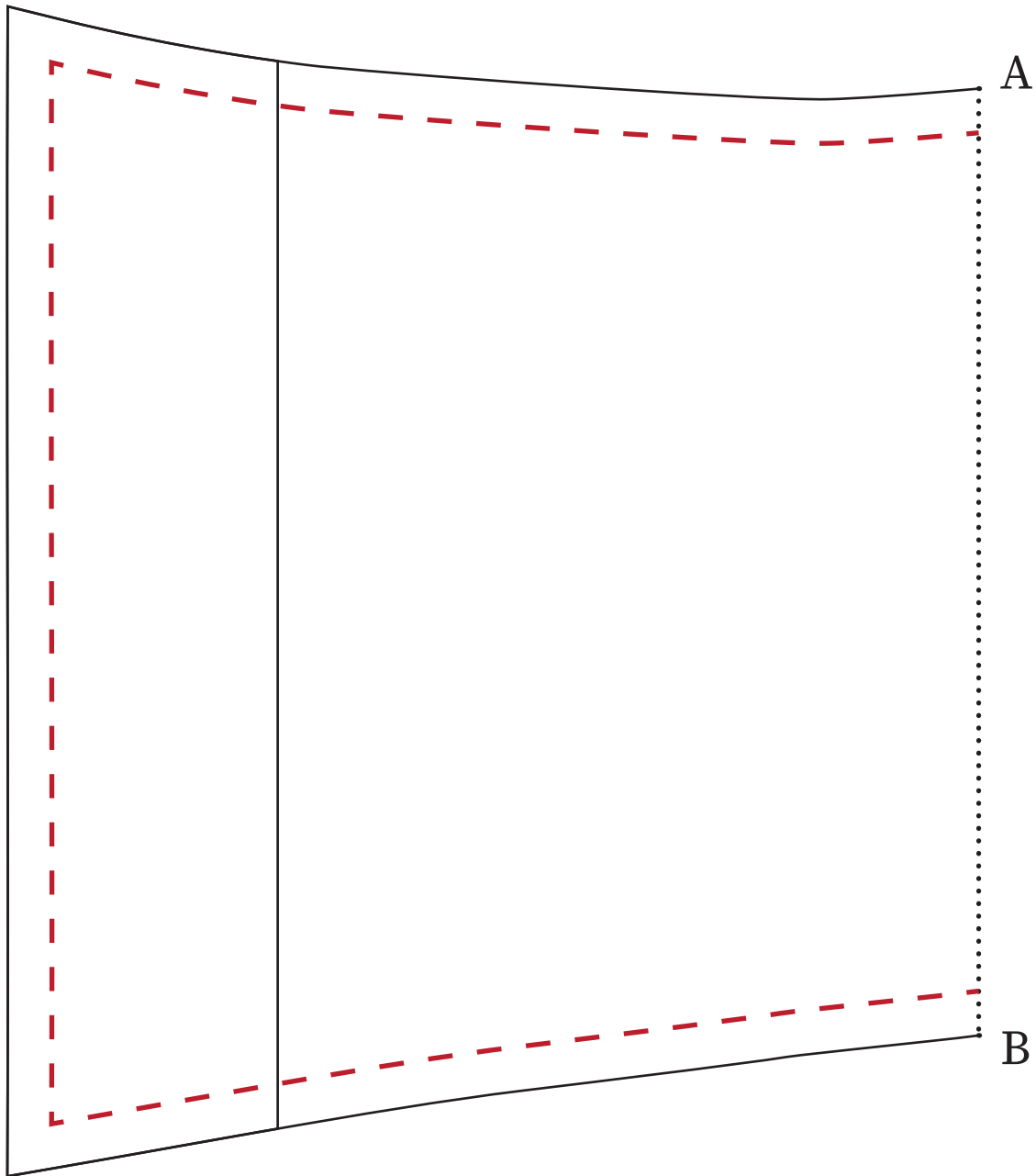
6. Cut out one (1) stocking Back piece out of your chosen Christmas Wish fabric.
7. Make a quilt sandwich of the Front piece: backing fabric wrong side up, wadding, and Front stocking piece right side up. Hand or machine quilt as desired.
8. Make a quilt sandwich of the Back piece: backing fabric wrong side up, wadding, and Back stocking piece right side up. Hand or machine quilt as desired.
9. Place the quilted Front stocking piece right side up. Position the hanging loop and pin in place. The loop will be facing inwards.
10. Place the quilted Back stocking piece onto the front stocking piece, right sides together, sandwiching the hanging loop between them.
11. Starting at the top, sew around the stocking using a $\frac{1}{4}$ inch seam allowance. Make sure to catch the hanging loop. Leave the top of the stocking open.



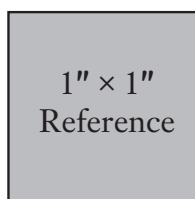
12. Neaten raw edges if desired and clip seam if needed. Make a binding strip and finish the top edge of the stocking.
13. Fill the stocking with presents and treats!

**I would love to see your finished Stocking. Please share your quilt with the hashtag #monikaboldogh on Instagram. Thank you.
Merry Christmas!**

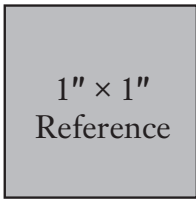
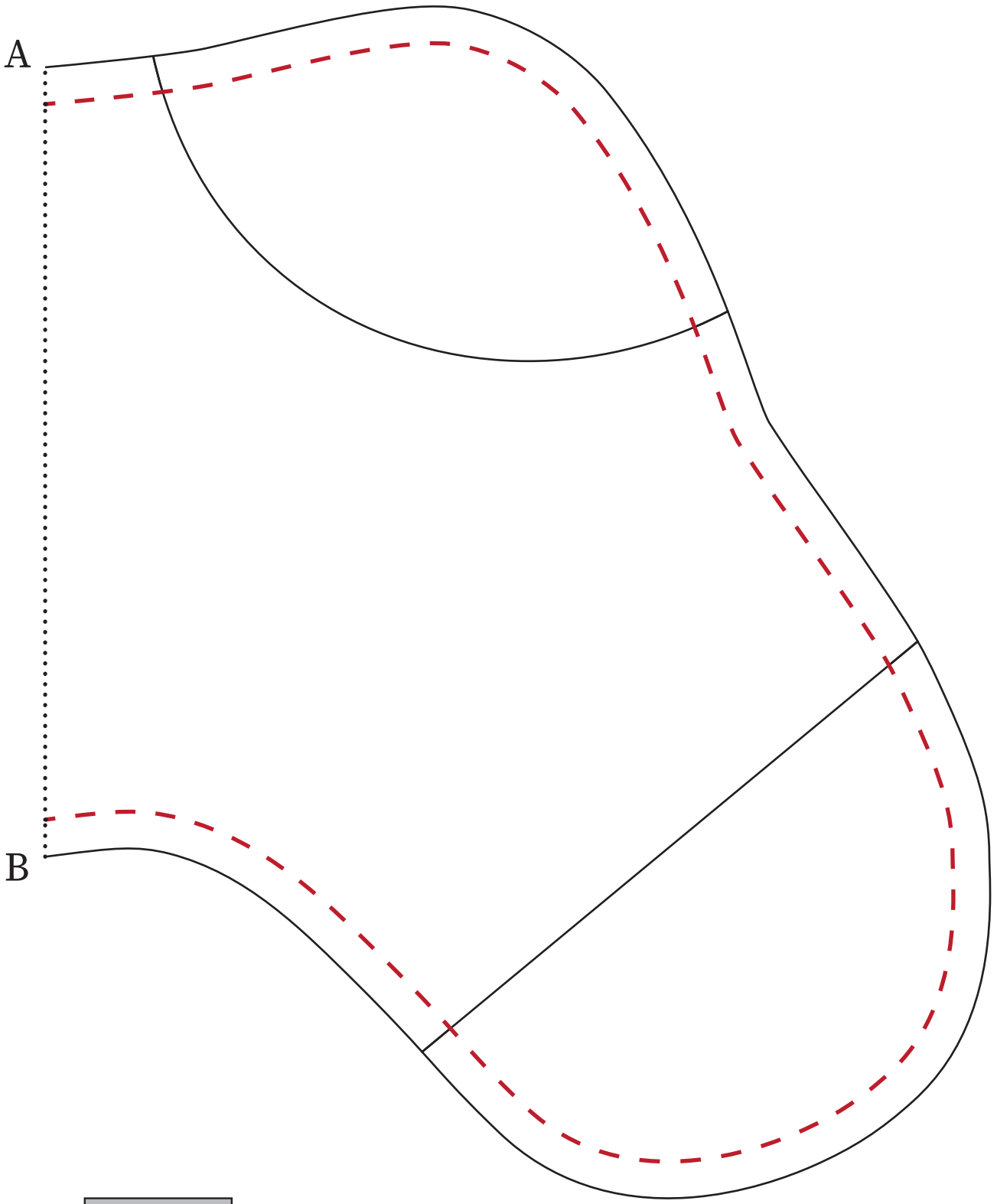
TEMPLATE



--- Sewing Line
1/4" seam allowance is included



TEMPLATE



1" x 1"
Reference

----- Sewing Line
1/4" seam allowance is included